

## 產品簡介

- ◆此型式油壓順序閥，特別適用於夾具回路，由壓力決定油壓缸之順序動作，體積小，耐高壓，安裝於回路中，不需其他控制，即可得到順序動作確實之效果。
- ◆本產品提供 A：油路板型 B：配管型兩種型式，可依夾具整體設計安裝方式需要作適當選擇。

## Introduction of product

- ◆ This series of hydraulic sequence valve is especially ideal for your fitting on the circuit of fixture. The hydraulic cylinder motion sequences are decided by the pressure. The sequence value features compact construction and high pressure resistance. It requires no further control when fitting on the circle, and provides a positive sequential motion control.
- ◆ This series provides two types mounting type for choice. A type is a manifold mounting type and B type is a line mounting type. You get a flexible choice of mounting types to suit your fixture design.

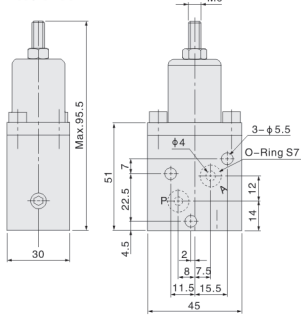


## 型式與壓力調整範圍

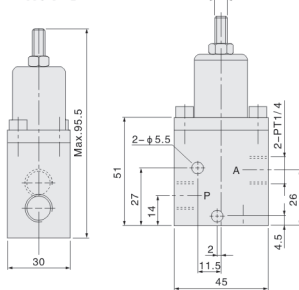
### Type and Pressure Range

油路板型	Manifold type	配管式	Line type
HSV-A	25-250kg/cm <sup>2</sup>	HSV-B	25-250kg/cm <sup>2</sup>

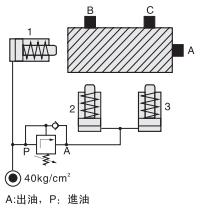
注：1、多個順序閥并聯于回路中使用時，相互間設定壓力差不得小于1Mpa(10kgf/cm<sup>2</sup>)  
2、工作壓力和設定壓力差值必須要1Mpa以上



## HSV-B



### 回路圖 Circuit diagram



油壓缸1將工件推向A,壓力達到HSV設定40kg/cm<sup>2</sup>  
油壓缸2.3同時將工件推向B.C,獲得順序夾持動作。  
The hydraulic cylinder 1 pushes workpiece to A. The pressure  
reaches to the setting value 40kg/cm<sup>2</sup> on HSV.  
The hydraulic cylinders 2 and 3 push workpiece to B and C to  
provide sequential clamping motion

## 產品簡介

此形式油壓順序閥，特別適用於夾具回路，  
由壓力決定油壓缸之順序動作，體積小，耐高壓，安裝於回路中，  
不需其他控制，即可得到順序動作確實之效果。  
本產品提供A：油路板型 B：配管型 兩種形式，  
可依夾具整體設計安裝方式需要作適當選擇。



## Introduction of product

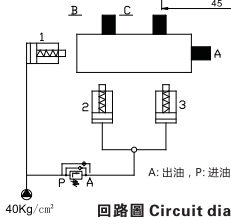
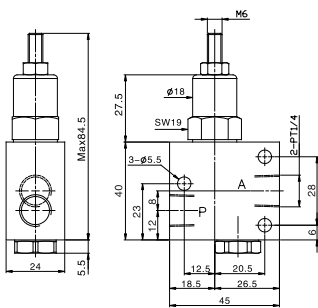
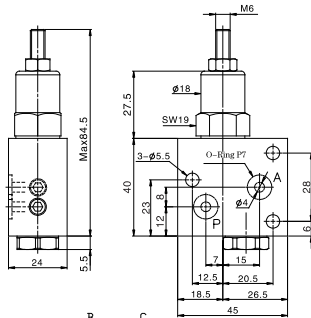
The series of hydraulic sequence valve is especially ideal for fitting on the circuit of fixture.

The hydraulic cylinder motion sequences are decided by the pressure.

The sequence valve features compact construction and high pressure resistance.

It requires no further control when fitting on the circuit, and provides a positive sequential motion control.

The series provides two types of mounting type for choice, A type is a manifold mounting type, and B type is a line mounting type. You get a flexible choice of mounting types to suit your fixture design.



**回路圖 Circuit diagram**

油路板型 Manifold type	配管式 line type	壓力調整範圍 Pressure Range
HSV-A1	HSV-B1	10~70kg/cm <sup>2</sup>

油壓缸1將工件推向A，壓力達到HSV設定40kg/cm<sup>2</sup>。  
油壓缸2、3同時將工件推向B、C，獲得順序夾持動作。

The hydraulic cylinder ipushes workpiece to A,  
The pressure reaches to the setting value 40kg/cm<sup>2</sup> on HSV  
The hydraulic cylinders 2 and 3 push workpiece to B and C to  
provide sequential clamping motion.