



HSW產品特性

- ◆此系列產品結構緊湊,設計合理,使用壽命長,在0.4-1MPa工作條件下性能穩定。
- ◆根據不同厚薄工件,可更換活塞杆伸出彈簧強弱。
- ◆活塞杆伸出接觸力小,0.2~0.6KG範圍內,特別適用於薄形工件。
- ◆安裝尺寸與目前市面銷售產品相容,可互換。

HSW Product features

- ◆This series of products with compact structure,reasonable design, long service life,in 0.4-1MPa working conditions stable performance.
- ◆According to the different thickness of workpiece,replaceable piston rod out of the spring strength.
- ◆The piston rod pieces out of contact force is small,0.2~0.6 KG range,especially suitable for thin workpiece.
- ◆Installation size and at present on market sales products compatible, interchangeable.

注意:

- ◆支撐柱塞上不能施加偏心負荷
- ◆不能施加過載負荷
- ◆鎖定狀態不能轉動活塞杆。

Attention:

- ◆Columns fortress cannot exert eccentric load.
- ◆Can't exert overloaded.
- ◆Can't turn the piston rod lock state.

產品簡介

A型: 夾縮支撐, 在初始位置時, 支撐頭在內部彈簧的作用下處於最上端, 工作時依靠工件在下放時的重力下壓支撐頭使之同步向下, 在工件穩妥的放在治具上時就停止下行, 支撐頭也停止下行, 加壓後支撐缸鎖定給工件提供支撐并停止運行。

B型: 上行支撐, 在初始位置時, 支撐頭位于最下端, 工件放好後, 給支撐缸加壓使支撐頭上行, 至碰到工件時支撐頭立刻停止上行并繼續加壓至鎖定, 這樣支撐頭就在當前位置給工件提供支撐并且停止。

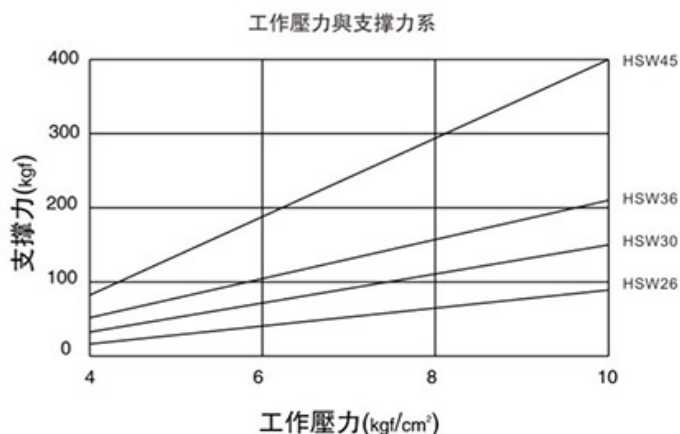
Introduction of product

- ◆Type A: Knocking-out with a spring, the spring is used to control a clamping force when the knocking-out rod (piston rod) extends to a highest knocking-out position and clamps the workpiece
- ◆Type B: Knocking-out with oil pressure, it is operated by means of oil pressure and is knocked out when being filled with oil and clamp the workpiece.

訂購標示法 Ordering Code

HSW -- 26 -- AL -- S

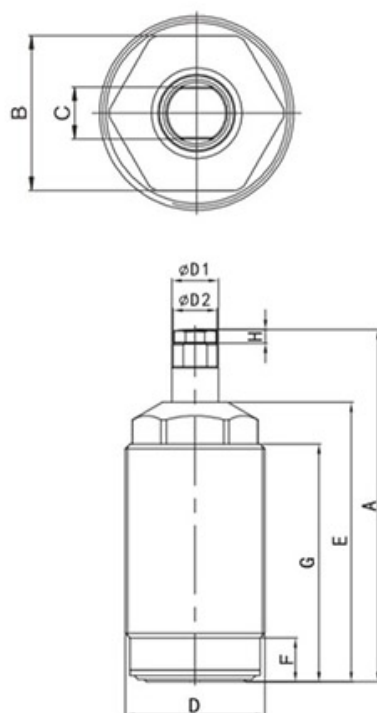
特性曲線圖HSW-****L



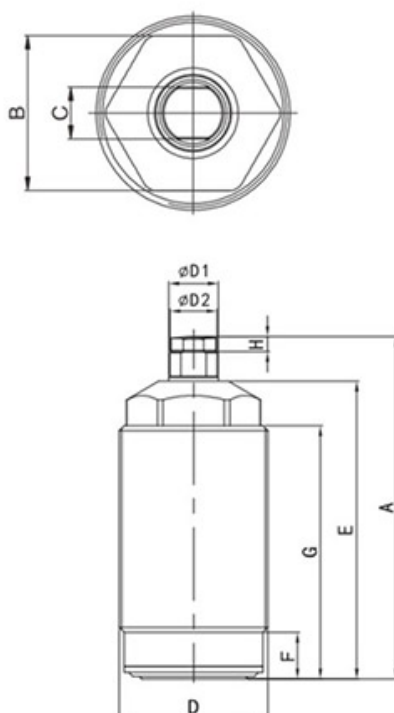
特性資料 Specification

類型Type	HSW-26	HSW-30	HSW-36	HSW-45
使用壓力範圍Range of pressure(kg/cm ²)	4 ~ 10kg/cm ²			
行程 Stroke(mm)	6.5	6.5	8	8
活塞杆徑Bore of piston(mm)	φ 10	φ 10	φ 10	φ 12
支撐力(kgf)/工作壓力(kgf/cm ²) Support(kgf)/Pressure of work(kgf/cm ²)	27/5	50/5	70/5	130/5
作動方式Acting type	單動式 Single acting			

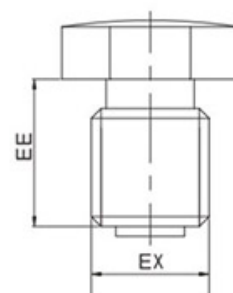
HSW-AL-S



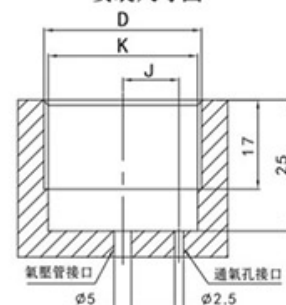
HSW-BL-S



圓頭螺栓



安裝尺寸圖



外形尺寸表 Dimension table

單位 (Unit) :mm

型號/Model	HSW-26AL-S	HSW-26BL-S	HSW-30AL-S	HSW-30BL-S	HSW-36AL-S	HSW-36BL-S	HSW-45AL-S	HSW-45BL-S
A	68.5	62	75.5	69	81	73	95	87
B	22	22	24	24	30	30	36	36
C	8	8	8	8	9	9	10	10
D	M26x1.5	M26x1.5	M30x1.5	M30x1.5	M36x1.5	M36x1.5	M45x1.5	M45x1.5
E	54.3	54.3	60	60	64	64	76	76
F	7	7	9.5	9.5	9.5	9.5	9.5	9.5
G	46.8	46.8	51	51	54	54	61	61
H	3	3	3	3	3	3	4	4
J	9	9	11	11	13	13	16	16
K	24.5	24.5	28.5	28.5	34.5	34.5	43.5	43.5
D1	10	10	10	10	10	10	12	12
D2	9.5	9.5	9.5	9.5	9.5	9.5	11.5	11.5
EE	6	6	7	7	8	8	9	9
EX	M6	M6	M6	M6	M8	M8	M8	M8